

Installing Instruction

Content

Requirements	1
Delivery status	1
Step 1.....	2
Step 2.....	3
Quickstart	3
Errors	3
Jar file does not start.....	3
Developing tool doesn't import or find files	4

Requirements

Operating System: Windows XP SP 2/ 2003 SP2 / Vista SP1

Java: J2SDK 1.4.2_19 (Download from www.java.com)

Developing Program: Netbeans 5.0 (Download from www.netbeans.org)

Please note, the above named requirements are tested other or older versions may also work.

Delivery status

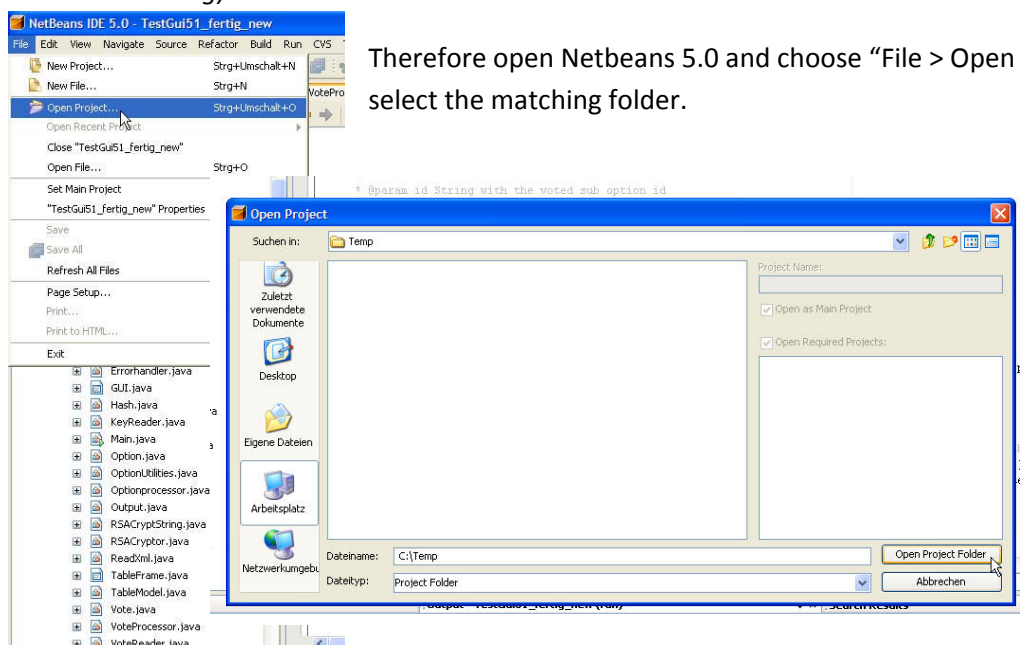
Please check if the zip file contains the following orders and files:

/build/classes/*.class	This folder contains all compiled class files, with a “clean and build” this folder and its content will be regenerated
/dist/	This folder contains distribution files like the compiled *.jar file with library and javadoc
/lib/AbsoluteLayout.jar	necessary library
/lib/swing-layout-1.0.jar.....	necessary library
/nbproject/	Netbeans 5.0 automatic generated folder for project details
/scr/Counter.java	This folder contains the *.java and *.form files (should contain 21 files)
/scr/Errorhandler.java	
/scr/GUI.form	
/scr/GUI.java	

- /scr/Hash.java
- /scr/KeyReader.java
- /scr/Main.java
- /scr/Option.java
- /scr/Optionprocessor.java
- /scr/OptionUtilities.java
- /scr/Output.java
- /scr/ReadXml.java
- /scr/RSA.java
- /scr/RSAToString.java
- /scr/TableFrame.form
- /scr/TableFrame.java
- /scr/TableModel.java
- /scr/Vote.java
- /scr/VoteProcessor.java
- /scr/VoteReader.java
- /scr/XmlParser.java
- /test/..... Netbeans 5.0 automatic generated test folder, is empty
- /build.xml Netbeans 5.0 generated build information
- /manifest.mf..... manifest.mf

Step 1

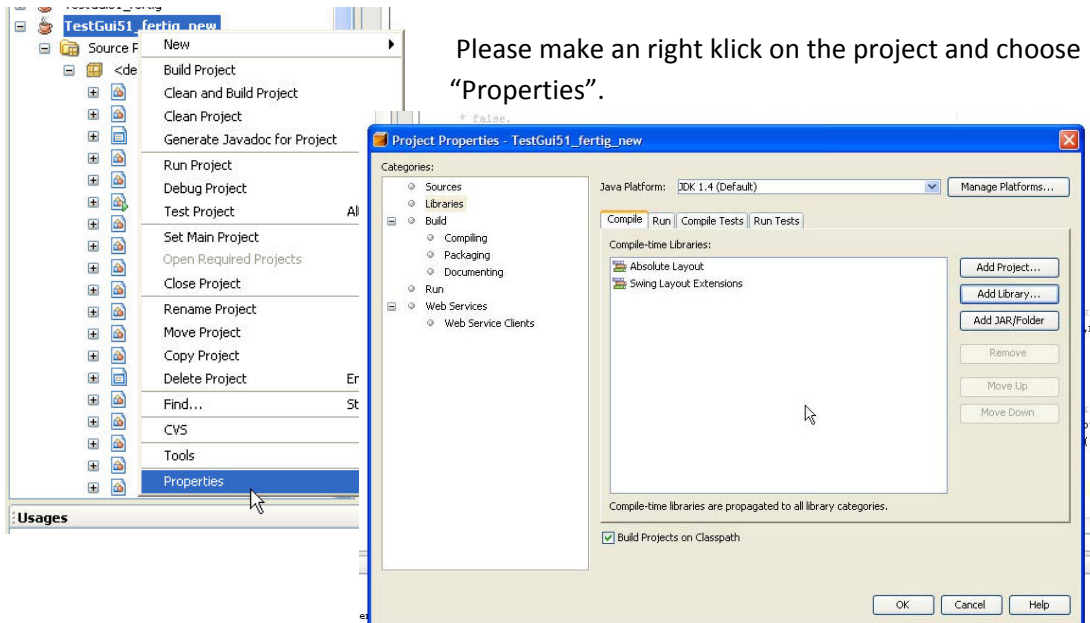
If you have downloaded and unpacked the zip file with project from the homepage you have to import the whole project folder into Netbeans 5.0. (Hint: you can download NetBeans 5.0 from www.netbeans.org)



Therefore open Netbeans 5.0 and choose "File > Open Project" and select the matching folder.

Step 2

Thereafter you should see project into Netbeans 5.0 Project Explorer. So before you can start please make sure that all necessary libraries are installed.



Then you will see the configuration popup, click on library. There you should see the

- Absolute layout and
- Swing layout extensions

If not, click on the "add library" button and choose both. (Hint: If you do not see the 2 packages, just click on the "add JAR/Folder" button and choose both jar files from "/lib/" folder)

Quickstart

If you do not want to import project but only to run it you will find the executable .jar file in the folder "dist". You can put this file in every other folder you only have to make sure that the 2 libraries at the "dist/lib/" folder are also in the same directory like the jar file.

Program can be started with following command line parameters: "java -jar filename.jar"

Errors

Jar file does not start

Please check if the necessary libraries (folder "/lib/" in the zip file with AbsoluteLayout.jar and swing-layout-1.0.jar) are in the same folder like the jar file. If so please check if you computer meets the requirements. To do so start the "dos-window" (cmd.exe) and type following command parameters "java -jar filename.jar". Then you should see your system config. Above this line errors like "NoClassDefFound" are shown.

Developing tool doesn't import or find files

This program was developed with Netbeans 5.0, so if you follow the installing instructions you should not experience any problems. Please download Netbeans 5.0 from www.netbeans.org

Alexander Scheidl
August, 2009